

# ABOUT THE SETTING SCREEN

## Accessing the setting screen

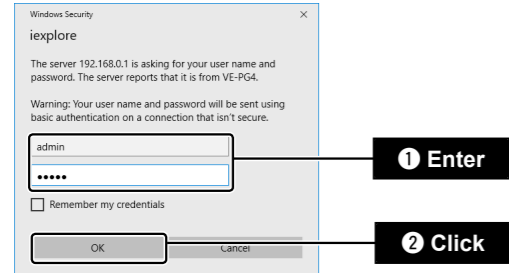
Use the setting screen as follows.

- 1 Open your web browser, then enter the IP address\* of the RoIP Gateway into the address bar.



\*The default IP address is "192.168.0.1."

- 2 Push the [ENTER] key.
  - The Login Authentication screen will appear.
- 3 Enter "admin" (fixed username) and "admin" (default password) in their respective input fields in the Login Authentication window, and then click [OK].



### To prevent unauthorized access

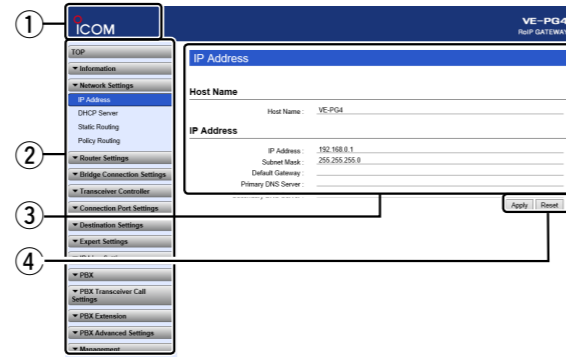
Carefully choose your password, and change it occasionally.

- Choose one that is not easy to guess.
- Use numbers, characters and letters (both lower and upper case).

### About web browsers

We recommend using Microsoft Internet Explorer 11 or later with the VE-PG4. Enable JavaScript® and set to allow Cookies on your web browser to correctly display the setting screen. If other browsers are used, the screen may not be correctly displayed.

## About the setting screen



### 1 Link to the Icom web site

If your PC is connected to the Internet, click the Icom logo to open the Icom web site.

### 2 Setting menu

Displays the screen name list on a menu line. When you click each menu title, a list of items drops down, which you can use to select the desired setting item.

### 3 Setting screen

Displays the settings and values when you click the screen name.

### 4 Setting buttons

Save or cancel the setting values.

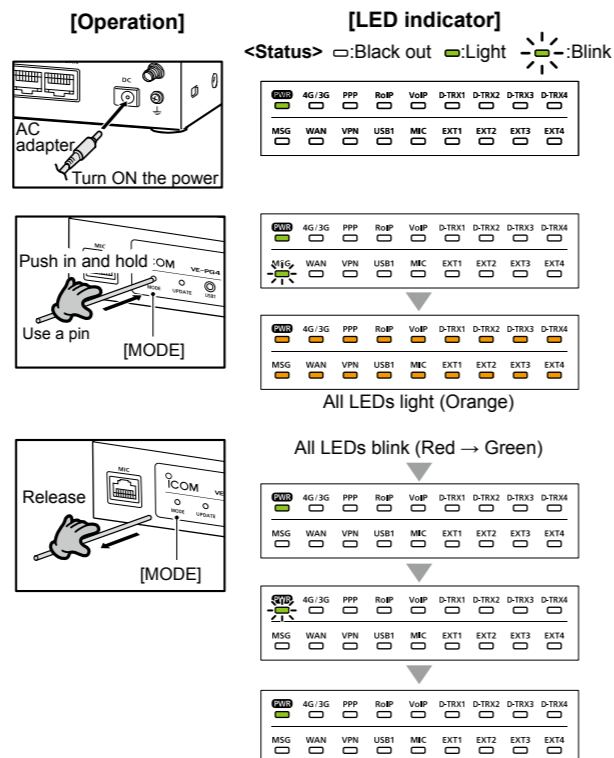
- Items and buttons may differ, depending on the setting.

# INITIALIZING THE RoIP Gateway

If you cannot access to the RoIP Gateway setting screen, you can initialize the RoIP Gateway.

- See the RoIP Gateway instruction manual for initializing from the setting screen.
- Initializing clears all the settings.

- 1 Disconnect all cables from the RoIP Gateway, and then connect the AC adapter.
  - Verify that the [PWR] indicator lights green.



\*The indication may differ, depending on the setting.

# ICOM

## RoIP Gateway

# VE-PG4

## PRECAUTIONS

Thank you for choosing this Icom product. This product is designed and built with Icom's state of the art technology and craftsmanship. With proper care, this product should provide you with years of trouble-free operation.

## IMPORTANT

**READ ALL INSTRUCTIONS** carefully and completely before using the RoIP Gateway.

**SAVE THESE INSTRUCTIONS** — These instructions contain important safety and operating instructions for the RoIP Gateway.

## PRECAUTIONS

### ■ For the RoIP Gateway

**WARNING!** NEVER use other than the specified AC adapter. This may result in an electrical shock, cause a fire or damage the RoIP Gateway.

**WARNING!** NEVER use non-specified accessories or options. This may result in an electrical shock, cause a fire or damage the RoIP Gateway.

**WARNING!** NEVER connect the AC adapter to other than the [DC] jack on the rear panel. This may result in an electrical shock, cause a fire or damage the RoIP Gateway.

**WARNING!** NEVER disassemble, modify or repair the RoIP Gateway. This may result in an electrical shock, cause a fire or damage the RoIP Gateway.

**WARNING!** NEVER install the RoIP Gateway in a wet place or outside. This may result in an electrical shock, cause a fire or damage the RoIP Gateway.

**WARNING!** NEVER operate or touch the RoIP Gateway with wet hands. This may result in an electrical shock or damage the RoIP Gateway.

**WARNING!** NEVER connect the ground terminal to a gas or electric pipe. This may result in an electrical shock or cause a fire.

**WARNING!** NEVER use the RoIP Gateway during a thunder and lightning storm. Using it may result in an electrical shock, cause a fire or damage the RoIP Gateway. Always disconnect the AC adapter before any storm.

**WARNING!** Immediately disconnect the AC adapter if the RoIP Gateway emits an abnormal odor, sound or smoke. Contact your Icom dealer or distributor for advice.

## EXPLICIT DEFINITIONS

WORD	DEFINITION
<b>WARNING!</b>	Personal injury, fire hazard or electric shock may occur.
<b>CAUTION</b>	Equipment damage may occur.
<b>NOTE</b>	If disregarded, inconvenience only. No risk of personal injury, fire or electric shock.

**CAUTION:** NEVER put the RoIP Gateway in any unstable place (such as on a slanted surface or vibrated place). This may cause injury and/or damage to the RoIP Gateway.

**CAUTION:** NEVER install the RoIP Gateway in a place without air vents. Heat dissipation may be reduced, and this could damage the RoIP Gateway.

**CAUTION:** Always place the RoIP Gateway in a secure place to avoid inadvertent use by unauthorized persons.

**CAUTION:** DO NOT use or place the RoIP Gateway in areas with temperatures below 0°C (+32°F) or above +40°C (+104°F).

**CAUTION:** DO NOT place the RoIP Gateway in direct sunlight. This could damage the RoIP Gateway.

**CAUTION:** DO NOT use the RoIP Gateway in strong magnetic fields or in an area with high static electricity. This could damage the RoIP Gateway.

**CAUTION:** Disconnect the AC adapter when you will not use the RoIP Gateway for a long period of time.

**CAUTION:** DO NOT use harsh solvents such as benzene or alcohol to clean the RoIP Gateway, as they can damage the RoIP Gateway's surfaces. If the RoIP Gateway becomes dusty or dirty, wipe it clean with a dry, soft cloth.

**CAUTION:** Use only the specified cable to connect a transceiver or repeater to the RoIP Gateway. Using another cable could cause damage to the RoIP Gateway or to the transceiver or repeater.

## PRECAUTIONS (Continued)

### ■ For the AC adapter

⚠ **WARNING! NEVER** use other than the RoIP Gateway. This may result in an electrical shock, cause a fire or damage the AC adapter.

⚠ **WARNING!** Connect the adapter into an outlet between 100 V and 240 V AC. Otherwise, this may result in an electrical shock, cause a fire or damage the AC adapter.

⚠ **WARNING! NEVER** install the AC adapter to wet place where is outside or near the humidifier. This may result in an electrical shock, cause a fire or damage the AC adapter.

⚠ **WARNING! NEVER** put something heavy on the AC adapter cable. This may result in an electrical shock, cause a fire or damage the AC adapter.

⚠ **WARNING! NEVER** modify, bend by force, twist, pull or heat the AC adapter's cable. This may result in an electrical shock, cause a fire or damage the AC adapter.

⚠ **WARNING! NEVER** touch the AC adapter with wet hands. This may result in an electrical shock or damage the AC adapter.

⚠ **WARNING! NEVER** use the AC adapter when it can not closely insert into the AC outlet. This may result in an electrical shock, cause a fire or damage the AC adapter.

⚠ **WARNING!** Use and place the AC adapter and connection cable to avoid inadvertent use by children. This may result in an electrical shock or cause injury.

### ■ Other precautions

- When operating the PC or external device, see those instruction manuals for details.
- The supplied AC adapter may at some time need to be replaced, depending on its life expectancy. The life of an AC adaptor differs according to the environment or condition in which the adaptor is used. We recommend replacement when it has been used for approximately 5 years (When used under the ambient temperature of 25 °C: 77°F). Contact your local dealer for details.
- RoIP Gateway supports only IPv4. IPv6 is not supported.

## FCC INFORMATION

**CAUTION: Changes or modifications to this equipment, not expressly approved by the Icom Inc., could void your authority to operate this equipment under FCC regulations.**

• **FOR CLASS B UNINTENTIONAL RADIATORS:** This equipment has been tested and found to comply with the limits for a Class B digital device, pursuant to part 15 of the FCC Rules. These limits are designed to provide reasonable protection against harmful interference in a residential installation. This equipment generates, uses and can radiate radio frequency energy and, if not installed and used in accordance with the instructions, may cause harmful interference to radio communications. However, there is no guarantee that interference will not occur in a particular installation.

If this equipment does cause harmful interference to radio or television reception, which can be determined by turning the equipment off and on, the user is encouraged to try to correct the interference by one or more of the following measures:

- Reorient or relocate the receiving antenna.
- Increase the separation between the equipment and receiver.
- Connect the equipment into an outlet on a circuit different from that to which the receiver is connected.
- Consult the dealer or an experienced radio/TV technician for help.

## ABOUT CE

Hereby, Icom Inc. declares that the versions of VE-PG4 which have the "CE" symbol on the product, comply with the essential requirements of the Radio Equipment Directive, 2014/53/EU, and the restriction of the use of certain hazardous substances in electrical and electronic equipment Directive, 2011/65/EU. The full text of the EU declaration of conformity is available at the following internet address: <http://www.icom.co.jp/world/support>

## DISPOSAL



The crossed-out wheeled-bin symbol on your product, literature, or packaging reminds you that in the European Union, all electrical and electronic products, batteries, and accumulators (rechargeable batteries) must be taken to designated collection locations at the end of their working life. Do not dispose of these products as unsorted municipal waste. Dispose of them according to the laws in your area.

## SUPPLIED ACCESSORIES

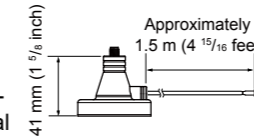
- Power adapter ... 1
- Clamp ..... 1
- Magnet legs ..... 4
- Screws ..... 4
- Connectors ..... 24
- Cushion sheet ..... 1
- Antennas ..... 2
- Antenna mount base ... 2
- This leaflet

① Refer to the web manual for transceivers and cables that are usable with the RoIP Gateway.

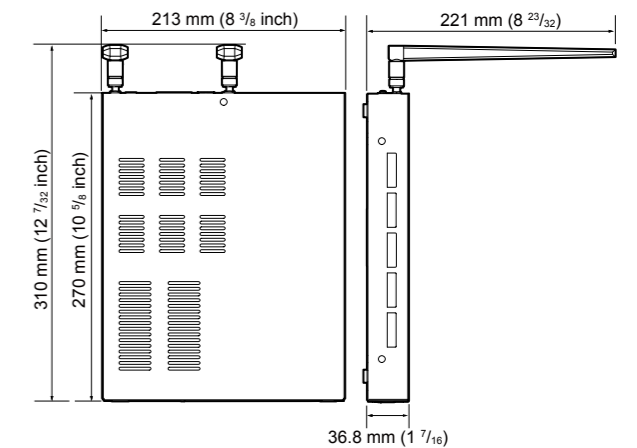
### About the antenna mount base

Use the supplied antenna mount base to place the antenna into a better location.

- Attach the mount base to a steel rack using the magnet on the bottom side. Refer to the web manual for details.

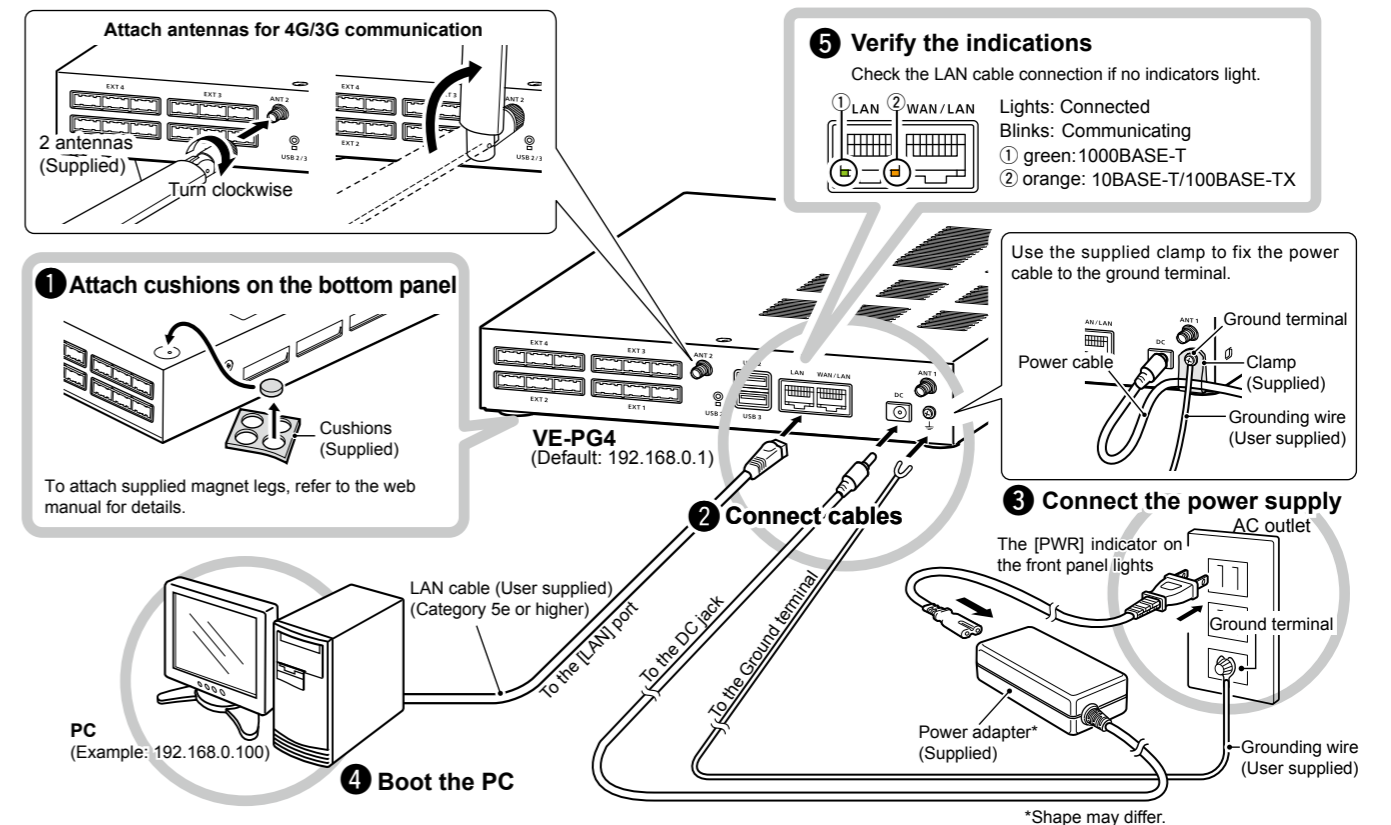


## DIMENSIONS



## CONNECTION

Disconnect the PC from the network, before connecting cables.



### IP address for PC

The RoIP Gateway's IP address is set to "192.168.0.1," and the DHCP server to "Disable" as the defaults. Set the PC's IP address in the 192.168.0.x network (Example: "192.168.0.100"). See the PC's instruction manual for the IP address setting details.

### ⚠ WARNING!

To prevent electrical shock, television interference (TVI), broadcast interference (BCI) and other problems, ground the RoIP Gateway through the ground terminal. **NEVER** connect the ground terminal to a gas or electric pipe. This may result in an electrical shock, or cause a fire.